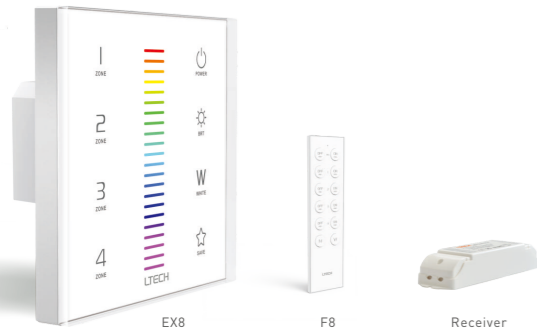


EX8 Touch Panel (RGBW)



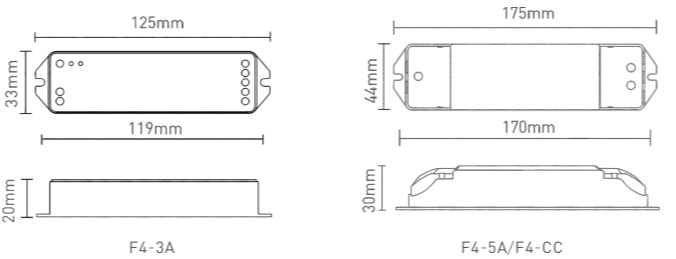
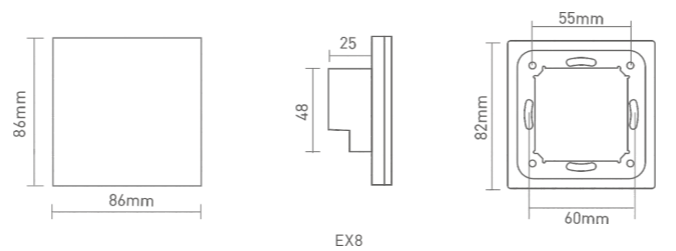
Manual
www.ltech-led.com

Technical Specs

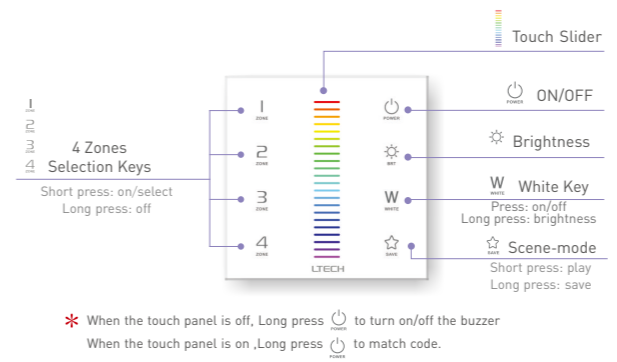
| | | | |
|------------------------------------|----------------------------|----------------|-------------------|
| EX8 RGBW Touch Panel (4 zones) | | | |
| Input Voltage: | 100~240Vac | Dimensions: | L86×W86×H36(mm) |
| Output Signal: | RF 2.4GHz, DMX512 | Package Size: | L113×W112×H50(mm) |
| Working Temp.: | -30°C~55°C | Weight(G.W.): | 225g |
| F4-3A CV Receiver | | | |
| Input Voltage: | 5~24Vdc | Working Temp.: | -30°C~55°C |
| Current Load: | 3A × 4CH Max. 12A | Dimensions: | L125×W33×H20(mm) |
| Max Output Power: | 60W/144W/288W(5V/12V/24V) | Package Size: | L127×W35×H24(mm) |
| Wireless Signal: | 2.4GHz | Weight(G.W.): | 60g |
| F4-5A CV Receiver | | | |
| Input Voltage: | 5~24Vdc | Working Temp.: | -30°C~55°C |
| Current Load: | 5A × 4CH Max. 20A | Dimensions: | L175×W44×H30(mm) |
| Max Output Power: | 100W/240W/480W(5V/12V/24V) | Package Size: | L178×W48×H33(mm) |
| Wireless Signal: | 2.4GHz | Weight(G.W.): | 150g |
| F4-CC CC Receiver | | | |
| Input Voltage: | 12~48Vdc | Working Temp.: | -30°C~55°C |
| Output Voltage: | 3~46Vdc | Dimensions: | L175×W44×H30(mm) |
| Output Current: | CC 350/700/1050mA×4CH | Package Size: | L178×W48×H33(mm) |
| Output Power: | 1.05W~48.3W×4CH Max 193.2W | Weight(G.W.): | 165g |
| Wireless Signal: | 2.4GHz | | |
| Note: Receiver is sold separately. | | | |



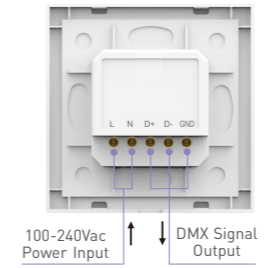
Product Size:



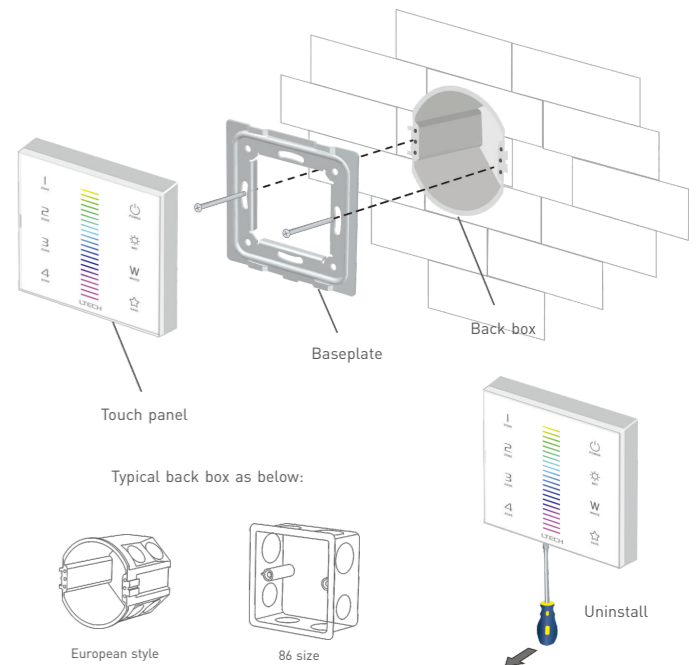
Key Functions:



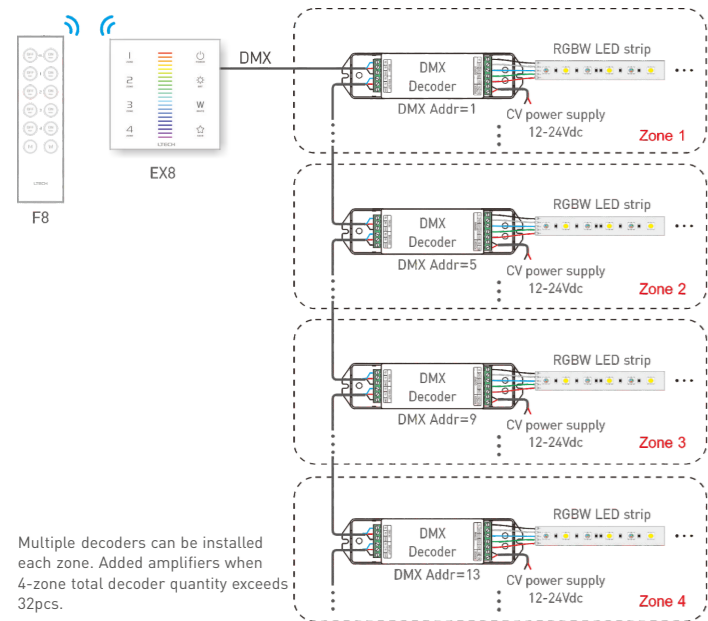
Terminals:



Installation Instruction:



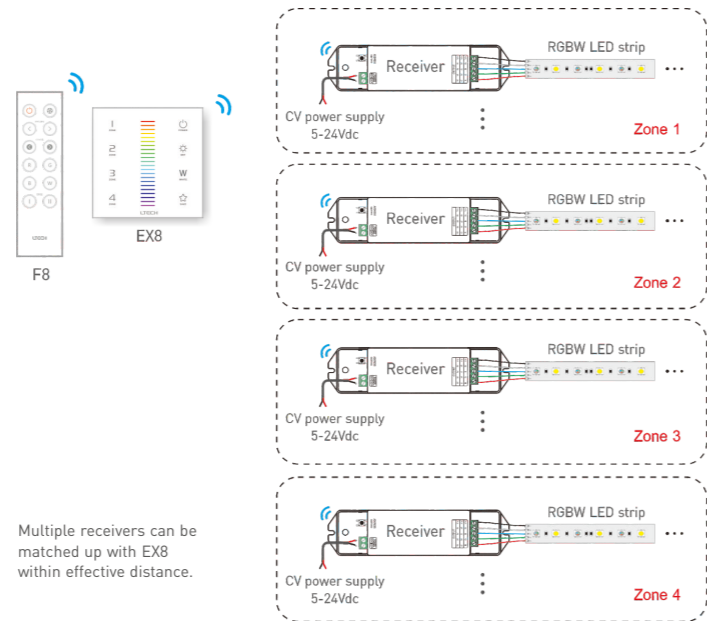
DMX Wiring:



Multiple decoders can be installed each zone. Added amplifiers when 4-zone total decoder quantity exceeds 32pcs.

LTECH

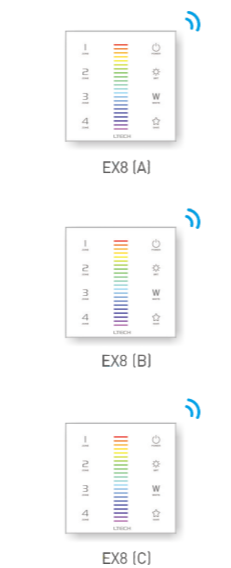
RF Wireless Wiring:



Multiple receivers can be matched up with EX8 within effective distance.

LTECH

Multi-control Wiring:



* After touch panel A realizes controlling the lamps, if B and C are matched up with A, they can also control the lamps.

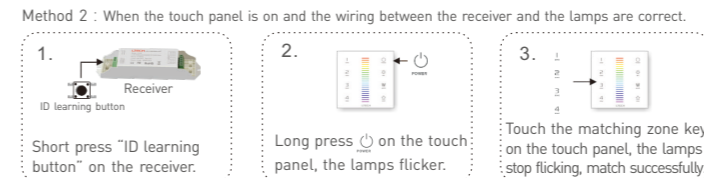
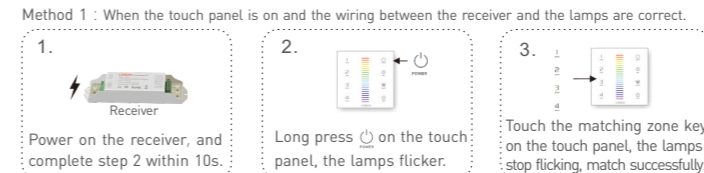
* Connecting touch panel with DMX decoders can also realize multi-control function.

LTECH

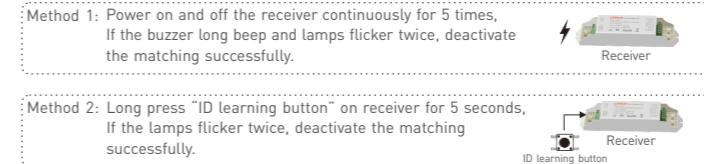
Match/Clear Code between Touch Panel & Receiver

LTECH

Match code:



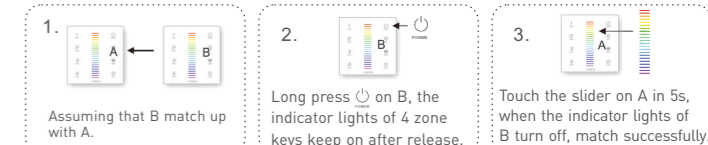
Clear code:



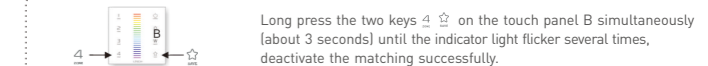
Match/Clear Code between Touch Panels:

LTECH

Match code:

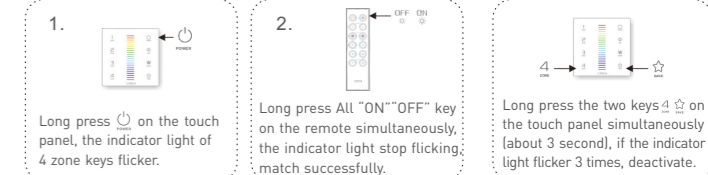


Clear code:



Match/Clear Code between Touch Panel & Remote:

Match code:



Clear code:

