

Model: LP1616D-1



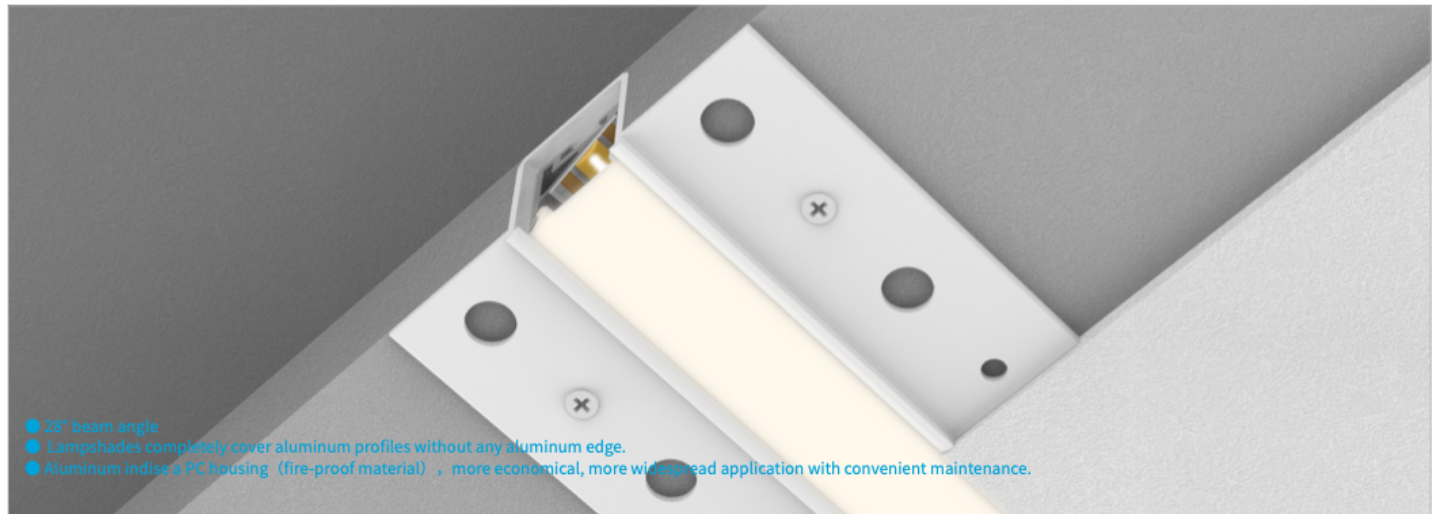
Silver



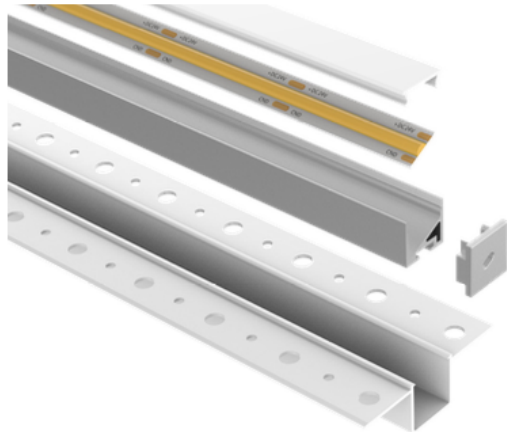
Black



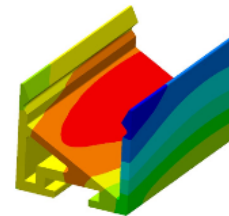
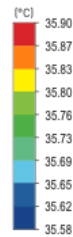
White  
(ral9016)



- 28° beam angle
- Lampshades completely cover aluminum profiles without any aluminum edge.
- Aluminum inside a PC housing (fire-proof material), more economical, more widespread application with convenient maintenance.



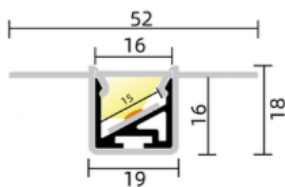
Temperature ambient: 25°C  
LED strip: D8280-24V- 12mm(14.4W/m)



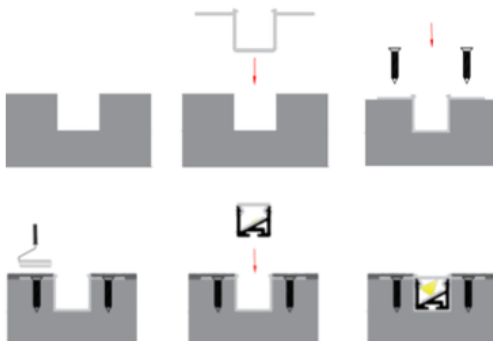
Temperature (solid) (°C)  
exterior view 1 : contour line

Material: AL6063-T5

SIZE



INSTALLATION



Accessory				
Art-No	Picture	Discription	Material	Color
1616D2		Cover	PC	Clear
1616D3		Cover	PC	Opal
1616D4		Cover	PC	Satin
1616DB		Cover	PC	Black
1616D8		End cap	Hole	White
1616D9		End cap	W/O hole	White
LSXXXXSPJT		Connector	Metal	Silver