



T8-20-1200-S-Dim

DONNEES TECHNIQUES	
Référence	T8-20-1200-S-Dim
Puissance	20 watts
Température couleur & Flux Lumineux	3000K = 2880 lm
	4000K = 3200 lm
Angle de diffusion	120°
Indice de rendu des couleurs	IRC 90
Indice de protection	IP 20
MacAdam	SDCM 3
Risque à la lumière bleu	RG 0
Orientable	Non
Variation	Non
Température de fonctionnement	de -20° à +40°
Tension d'alimentation	AC220-240V
Diode	Epistar
Durée de vie	50'000 heures
Garantie	5 ans
SPECIFICATIONS	
Taille du Luminaire	1198 x ø26 mm

Sensor
100% 30 secondes 20%

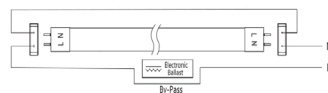
5. Standard Installation

1. Installation For Magnetic Ballast



ATTENTION just replace starter with fuse for retrofit only suitable for battens with magnetic ballast, not electronic ballast

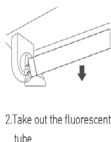
2. Installation For Electronic Ballast



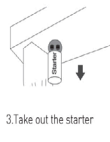
ATTENTION Electronic ballast must be by-passed by a registered electrician



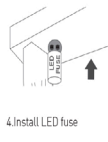
1. Turn off the power



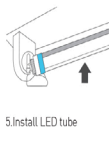
2. Take out the fluorescent tube



3. Take out the starter



4. Install LED fuse



5. Install LED tube



6. Turn on the power