

Trim + M60.11 Tube in



Trimless kit + M60.11 Tube out



Trimless kit + M60.11 Tube out

Item Code: M60.11

Key Features: Tiltable & adjustable, 16 kinds of different finishings for Tube; Magnetic anti-glare bezel, interchangeable easily

System Power: Max.10W

Color Temperature: Regular ones, DTW & Tunable White

CRI: >90

IP Rating: IP43 (IP54 & IP65 can be customised)

Forward Voltage (V) & LED Current (mA): 36Vdc & 200mA (Max.250mA)

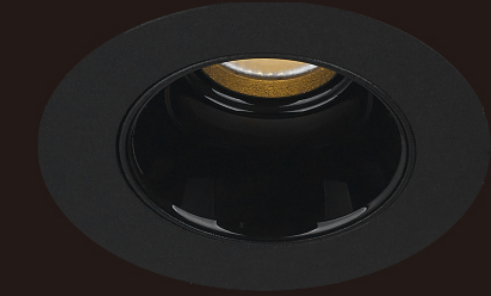
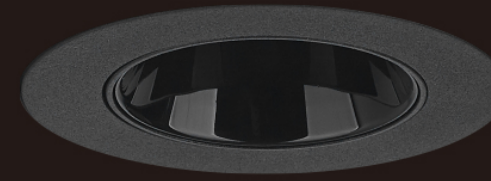
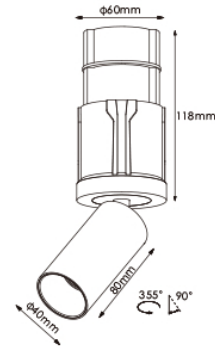
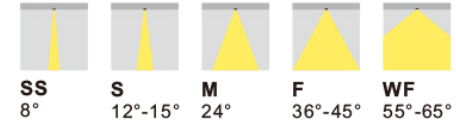
Base Finishing: Sand White/Sand black

To be ordered separately: 1) Mounting Kits; 2) Anti-glare Bezel; 3) Constant current driver

Tube Finishing: Refer to M60.6 (P25)

Bezel Options: Refer to M40.6 (P13)

Reflectors



Push-in for an invisible downlight and push-out for an elegant projector. Different finishings for tubes and different colors for bezels to achieve all applications