



Trim + M60.17



Trimless kit + M60.17

Item Code: M60.17

Key Features: Semi-recessed projector, Tilttable & adjustable,
16 kinds of different finishings for tube;
Magnetic anti-glare bezel, interchangeable easily

System Power: Max.12W

Color Temperature: Regular ones, DTW & Tunable White

CRI: >90

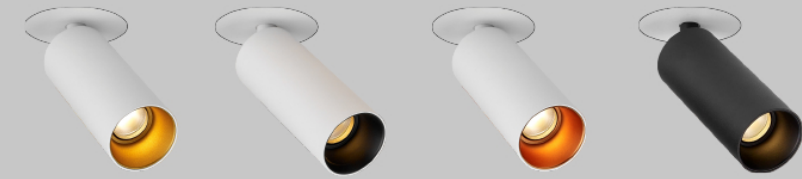
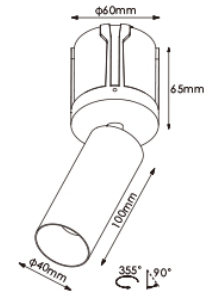
IP Rating: IP43 (IP54 & IP65 can be customised)

Forward Voltage(V) & LED Current(mA): 36Vdc & 250mA(Max.300mA)

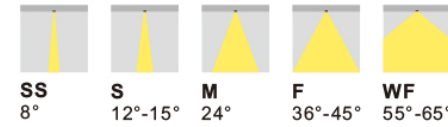
Tube Finishing: Refer to M60.6 (P25)

Bezel Options: Refer to M40.6 (P13)

To be ordered separately: 1) Mounting Kits; 2) Anti-glare Bezel; 3) Constant current driver



Reflectors



Trim + M60.18



Trimless kit + M60.18

Item Code: M60.18

Key Features: Semi-recessed projector, Tilttable & adjustable,
16 kinds of different finishings for tube;
Magnetic anti-glare bezel, interchangeable easily

System Power: Max.15W

Color Temperature: Regular ones, DTW & Tunable White

CRI: >90

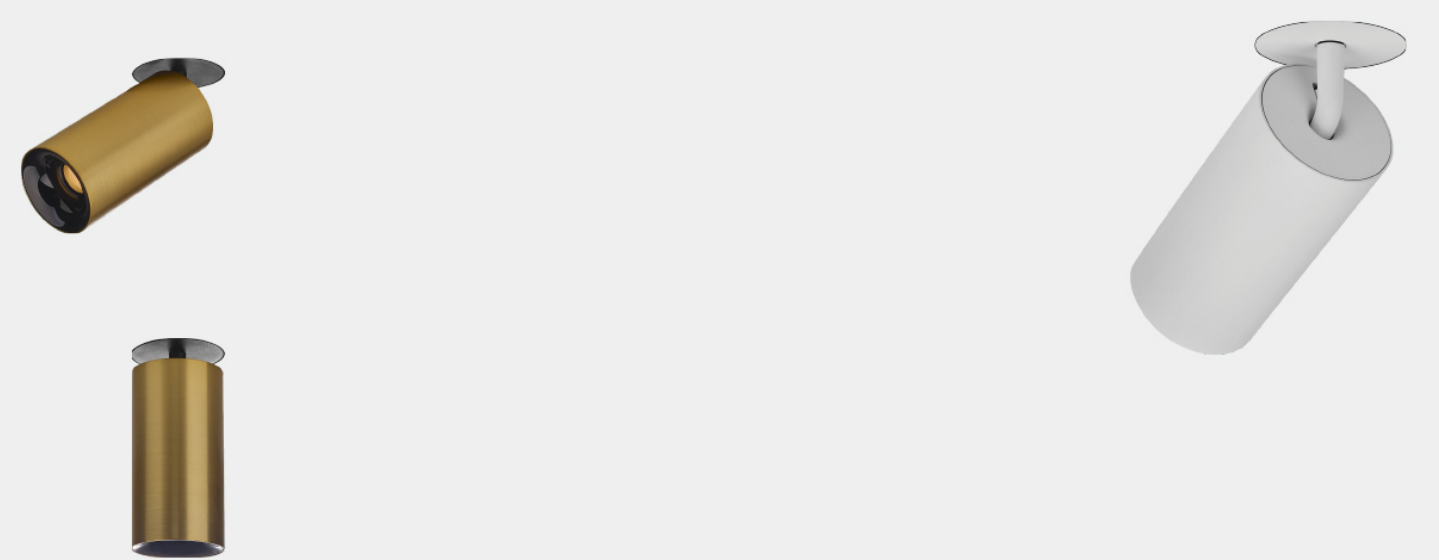
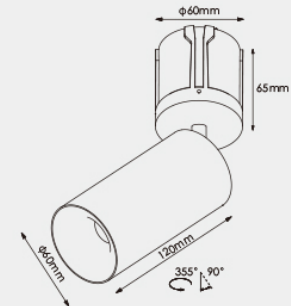
IP Rating: IP43 (IP54 & IP65 can be customised)

Forward Voltage(V) & LED Current(mA): 36Vdc & 250mA(Max.350mA)

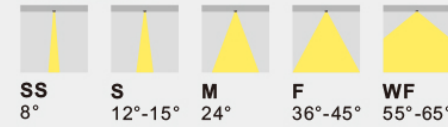
Sphere Finishing: Refer to M60.6 (P25)

Bezel Options: Refer to M80.1 (P51)

To be ordered separately: 1) Mounting Kits; 2) Anti-glare Bezel; 3) Constant current driver



Reflectors



Trim + M60.19



Trimless kit + M60.19

Item Code: M60.19

Key Features: Semi-recessed projector, Tilttable & adjustable,
16 kinds of different finishings for tube;
Magnetic anti-glare bezel, interchangeable easily

System Power: Max.20W

Color Temperature: Regular ones, DTW & Tunable White

CRI: >90

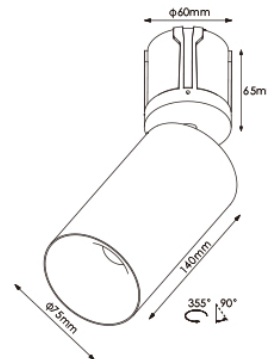
IP Rating: IP43 (IP54 & IP65 can be customised)

Forward Voltage(V) & LED Current(mA): 36Vdc & 350mA(Max.500mA)

Sphere Finishing: Refer to M60.6 (P25)

Bezel Options: Refer to M80.19 (P58)

To be ordered separately: 1) Mounting Kits; 2) Anti-glare Bezel; 3) Constant current driver



Reflectors

