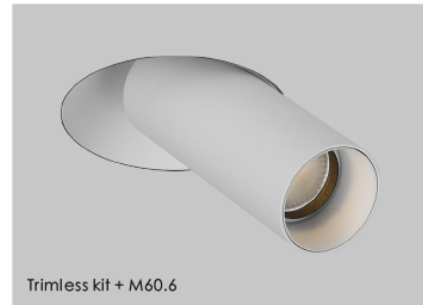


Trim + M60.6



Trimless kit + M60.6

Item Code: M60.6

Key Features: Tilttable & adjustable, 16 kinds of different finishings for Tube

System Power: Max.8W

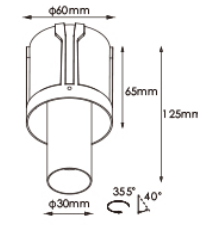
Color Temperature: Regular ones, DTW & Tunable White

CRI: >90

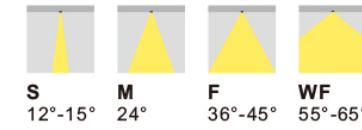
IP Rating: IP43 (IP54 can be customised)

Forward Voltage(V) & LED Current(mA): 36Vdc & 180mA(Max.200mA)

To be ordered separately: 1) Mounting Kits; 2) Anti-glare bezel; 3) Constant current driver

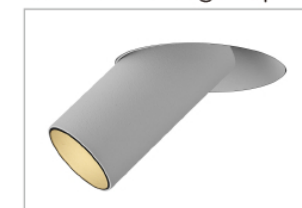


Reflectors



S 12°-15° M 24° F 36°-45° WF 55°-65°

Tube Finishing & Sphere Finishing



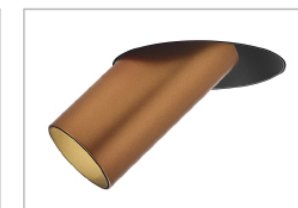
Code: F01.001 Sand White(Powder-coating)



Code: F01.002 Sand Black(Powder-coating)



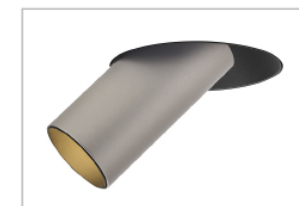
Code: F02.001 Matt Gold(Spray Painting)



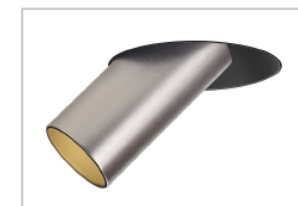
Code: F02.002 Matt Copper(Spray Painting)



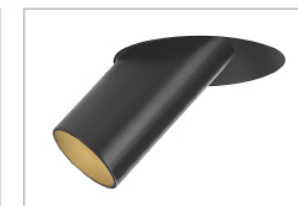
Code: F03.001 Sand Black(Anodized)



Code: F03.002 Sand Silver(Anodized)



Code: F03.003 Brushed Aluminum(Anodized)



Code: F03.004 Brushed Black(Anodized)



Code: F03.005 Brushed Gold(Anodized)



Code: F04.001 Brushed Alum.(Electroplating)



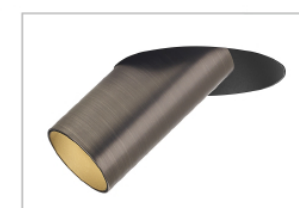
Code: F04.002 Brushed Brass(Electroplating)



Code: F04.003 Brushed Antique Bronze(Electroplating)



Code: F04.004 Brushed Gold(Electroplating)



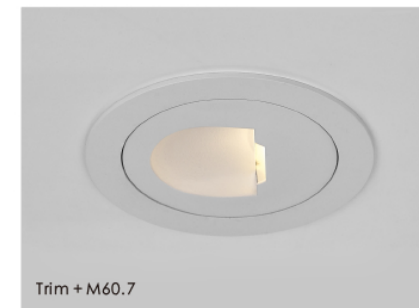
Code: F04.005 Brushed Nickel(Electroplating)



Code: F04.006 Brushed Rose(Electroplating)



Code: F04.007 Glossy Black(Electroplating)



Trim + M60.7



Trimless kit + M60.7

Item Code: M60.7

Key Features: Wallwasher, die-casting aluminium cover matching the texture trim

System Power: Max.12W

Color Temperature: Regular ones, DTW & Tunable White

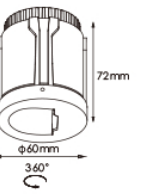
CRI: >90

IP Rating: IP43

Forward Voltage(V) & LED Current(mA): 36Vdc & 250mA

Body Finishing: Sand White/Sand Black

To be ordered separately: 1) Mounting Kits; 2) Constant current driver



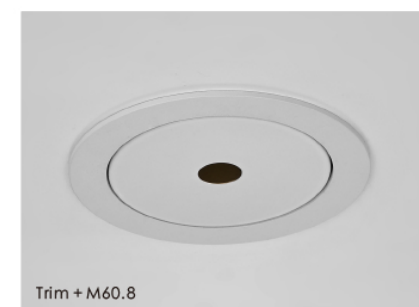
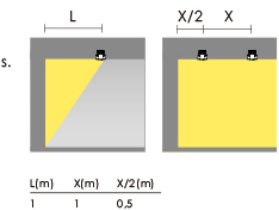
Optics

The innovative wall washer optic was designed to ensure uniform lighting of walls, from the highest to the lowest points, as well as avoiding shadow areas in zones near the ceiling.

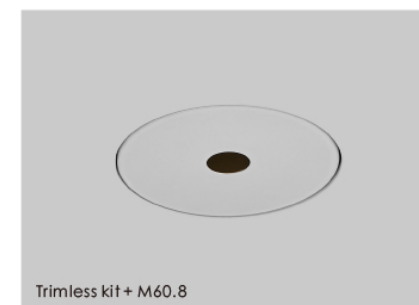


Correct installation

Correct installation distances to achieve uniform lighting of the walls. For installation criteria, refer to the instruction sheet.



Trim + M60.8



Trimless kit + M60.8

Item Code: M60.8

Key Features: Black hole, invisible in the ceiling

System Power: Max.8W

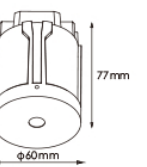
Color Temperature: Regular ones, DTW & Tunable White

IP Rating: IP43 (IP54 can be customised)

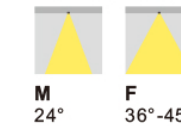
Forward Voltage(V) & LED Current(mA): 36Vdc & 180mA(Max.200mA)

Body Finishing: Sand White/Sand Black

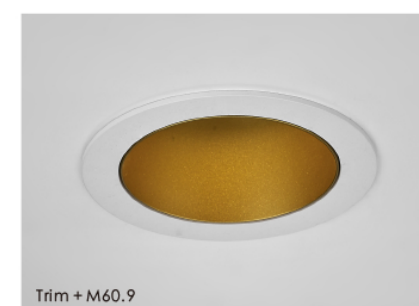
To be ordered separately: 1) Mounting Kits; 2) Constant current driver



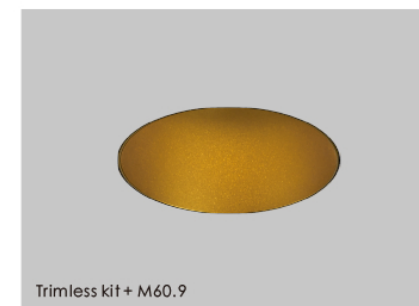
Reflectors



M 24° F 36°-45°



Trim + M60.9



Trimless kit + M60.9

Item Code: M60.9

Key Features: U-shape with Lotus lighting system to deliver warm but comfortable lighting feelings

System Power: Max.10W

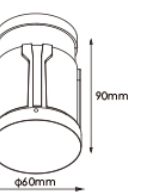
Color Temperature: Regular ones, DTW & Tunable White

CRI: >90

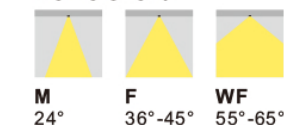
IP Rating: IP43 (IP54 & IP65 can be customised)

Forward Voltage(V) & LED Current(mA): 36Vdc & 250mA

To be ordered separately: 1) Mounting Kits; 2) Constant current driver



Reflectors



M 24° F 36°-45° WF 55°-65°

Bezel Options



F02.003 F02.004 F02.001 F02.002