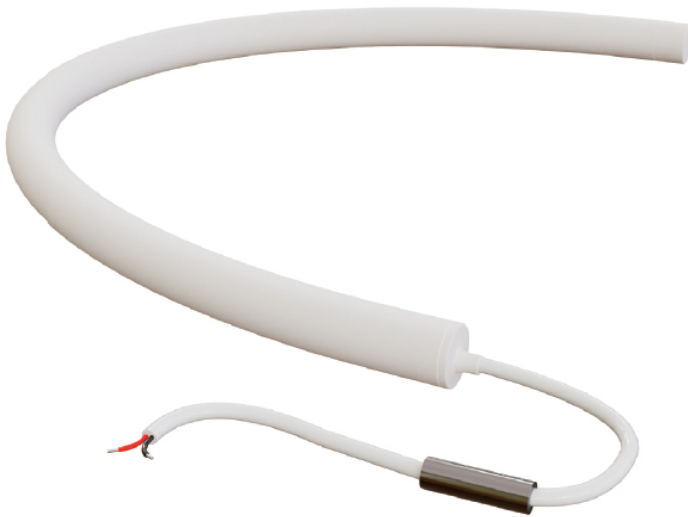
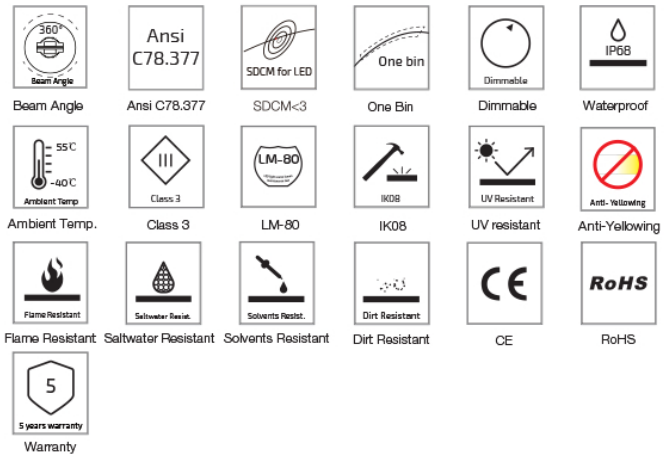
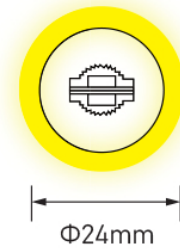


SF24 Mono Color 360° Emitting Silicone LED Linear Flex












Specification

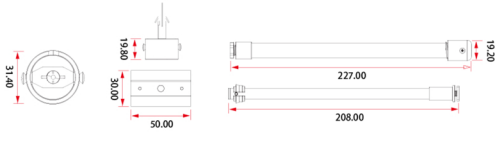


Dimension



Technical Parameters

Electrical		Optional Color	
Input Voltage	24V DC		2200K(2238±102K)
Power Consumption	15W/m		2700K(2725±145K)
Physical			3000K(3045±175K)
LED Count	240 LEDs/m		3500K(3465±245K)
Cutting Unit	24 LEDs		4000K(3985±275K)
Cutting Unit Length	100 mm		4500K(4503±243K)
Minimum Bend Diameter	120mm		5000K(5029±283K)
Output			6500K(6532±510K)
LED Light	Epistar SMD LED 2835		Green(520-530nm)
CRI	>80, >90		Blue (455-465nm)
Max Run Length*			Red (620-630nm)
Single Feed	10 M		
Double Feed	20 M		
Beam Angle	360°		
Lumen Maintenance	70,000 Hours L70 @ 25°C 50,000 Hours L70 @ 50°C		
Temperature Ranges			
Installation	0°C to 50°C		
Operating	-40°C to 55°C		
Dependability			
Warranty	5 Years Warranty		
IP Rating	IP68		

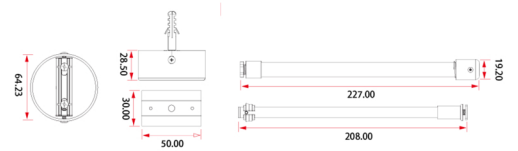


SF24-AAB-TLR

Material: aluminum alloy

Detailed Items:

- 1pc aluminum alloy base,
- 1pc telescopic lifting rod,
- 2pcs plastic anchor,
- 1pcs plastic clips(3cm),
- 4pcs screws and etc accessories



SF24-MB-TLR

Detailed Items:

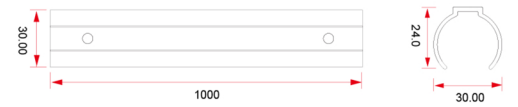
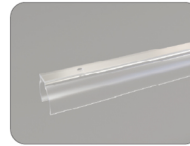
- 1pc metal base,
- 1pc telescopic lifting rod,
- 2pcs plastic anchor,
- 1pcs plastic clips(3cm),
- 4pcs screws and etc accessories



SF24-PA

Detailed Items:

- 1set pendant wire rope,
- 1pcs plastic anchor,
- 1pcs plastic clips(3cm),
- 1pcs screws and etc accessories



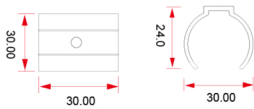
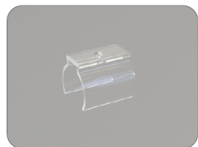
PC24S01-T-100

Material: PC

Length: 1m

Color: Clear

Hole: 1



PC24S01-T-03

Mounting Plastic Clips

Material: PC

Length: 3cm

Color: Clear

Hole: 1



PC24S02-T-05

Material: PC

Length: 5cm

Color: Clear

Hole: 3

Screw: 3pcs